



REPORTER

A publication of the California State University Emeritus and Retired Faculty Association

ERFA JOINS CSU CAMPUS COALITION IN SUPPORT OF PROPOSITIONS 111 AND 108

At the ERFA State Council meeting in Sacramento on February 17, the Council voted unanimously to join the CSU Campus Coalition in supporting Propositions 111 and 108 at the June election. Together, these propositions would give effect to SCA 1 (Garamendi), a hard-won agreement by key groups to modify the Gann limit on state appropriations and to take substantial steps to meet the state's transportation needs.

Without SCA 1, the State can not finance even current service levels in higher education, health and welfare, and senior programs, let alone deal with problems of drugs, crime, AIDS, earthquake protection, and environmental damage. Even if the State were to generate additional revenue, the Gann limit will not allow the State to spend the money (except for education's K-14 share as authorized by Proposition 98; this share, when combined with the Gann limit, puts an ever tighter squeeze on all the other state programs).

This CSU Campus Coalition plans to help pass Propositions 111 and 108 in June. The Coalition includes the CSU Student Association, the CSU Administration, CSEA, CFA, Californians for Higher Education, and others. ERFA hopes to have an emeritus representative on each campus committee and will call on all ERFA members to help with educating the campus communities on the legislation, with voter registration, and with the absentee ballot campaign—whatever is needed.

The ERFA State Council believes getting these measures passed is vital for higher education, for staving off student fee increases, and for meeting the needs of both active and retired faculty and staff—as well as helping the State meet pressing needs in health and welfare.

The State Council asks all ERFA members to volunteer to help, either through a local emeritus organization or through ERFA at the state level. Members wanting more information are urged to call the following: Jack Byrom @ 818-886-1196 or 818-886-7050; Milt Dobkin @ 707-822-2064; Wilma Krebs @ 916-489-6919; or Bill Tidwell @ 209-561-3105.—W. Krebs

STATE COUNCIL MEETING IN LOS ANGELES MAY 5

The next State Council meeting is scheduled for Los Angeles on May 5. The meeting will start at 10:00 AM and last until approximately 3:30 PM. Executive Director Byrom has yet to finalize agreement on the location at one of the hotels near LAX. All members are encouraged to attend.

PRESIDENT DOBKIN REPORTS ON STATE COUNCIL MEETING

At the February 17 ERFA state council meeting in Sacramento, the representatives approved a membership survey prepared by the membership committee, Chair C. Dale Johnson (SD). This survey will help the state council determine the needs and interests of ERFA members. Target date for mailing the survey to members is March 15. ERFA members are asked to watch for this questionnaire and take the time to respond. The leadership needs to know what members think and whether or not present ERFA activities are on track.

In addition to approval of this questionnaire and other items discussed in this issue of the *ERFA Reporter*, the state council also developed a procedure for CSU campus retiree organizations to affiliate with ERFA, amended the by-laws to provide for an *ex officio* staff officer to serve as an executive director and as a non-voting member of the executive committee, authorized consummation of plans for ERFA members to participate in the National Emeriti Placement Program (see previous issue of *ERFA Reporter*), and approved appointment of a committee to study various possible voluntary long term health care programs for ERFA members.—Milton Dobkin

LEGISLATIVE CHAIR TIDWELL REPORTS ON PROPOSED LEGISLATION OF CONCERN TO ERFA

Still alive in the Legislature are two bills of interest to CSU retirees: AB 490 and SB 1683.

AP 490 (Assemblyman Lancaster) would give retirees vision care insurance comparable to that provided active state employees. This bill, supported by ERFA, is now held in the Senate Appropriations Committee until the budget is heard.

SB 1683 (Senator Mello) would increase the amount of the lump sum death benefit. The Senate passed this bill and the Assembly Public Employees, Retirement, and Social Security Committee is expected to approve it. However, the Assembly Ways and Means Committee will probably hold the bill, pending action on the State budget.

Observers in Sacramento doubt passage of both bills because of their cost. Organizations representing retirees may have to decide which of the two is more desirable and work hard to secure passage. ERFA members should encourage their legislators to support these bills.

Senator Alquist has agreed to author a bill that would allow PERS to present its own budget to the Legislature. At
(continued on page 3)

THE PROVENANCE OF ERFA

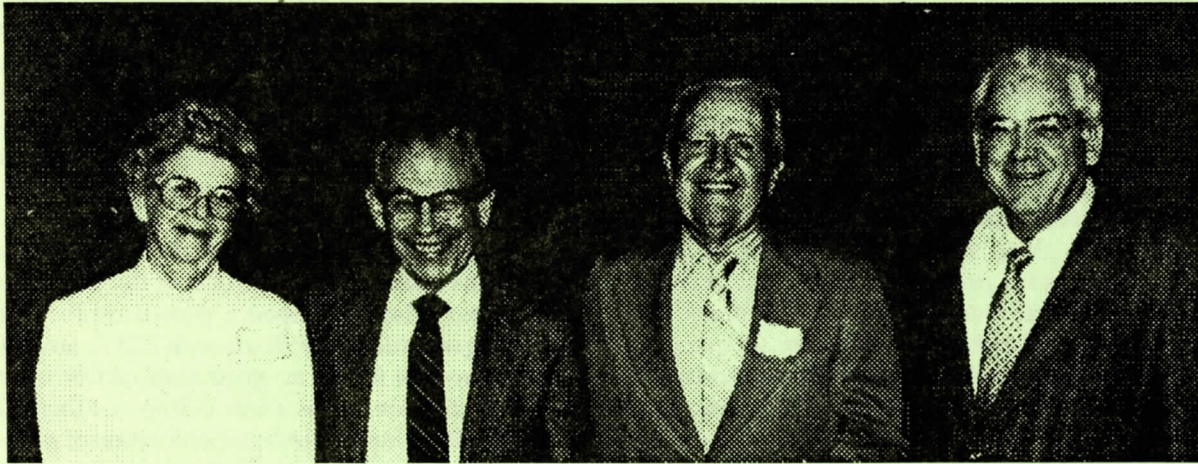
ERFA, née AEP (Association of Emeriti Professors) is now five years old. Apropos of this birthday, I have been asked to report on the genesis of the Association.

On July 17, 1981, Robert D. Kully (Los Angeles), then chair of the CSU Academic Senate, appointed a three-member ad hoc committee to study the role of emeritus faculty in the CSU. This action followed the submission of my "Proposal on Retirement Issues" to the Senate's Faculty Affairs Committee and the subsequent adoption of a "Statement on Emeritus Faculty" by the Senate on May 8, 1981. On February 1, 1983, John W. Bedell (Fullerton), the new senate chair, appointed a successor committee of emeriti—Sidney Albert (Los Ange-

meriti on nearly all the campuses, and in the course of time the systemwide movement sparked the formation of associations on most of the campuses.

The unavailability of secretarial assistance was a severe stumbling block, necessitating a great deal of communication by long-distance telephone. Fortunately, the Chancellor's Office—and more particularly Joy Phillips, the Chancellor's secretary—came to the rescue, facilitating the meeting arrangements and supplying the virtually indispensable typing and mailing services.

On December 10, 1984, a committee consisting of Phyllis Watts of Fresno, Fred McMahon of Northridge, and Leonard Mathy of Los Angeles met with me at CSU headquarters in Long Beach to draft a Constitution and to settle



ERFA FOUNDING OFFICERS . FROM LEFT TO RIGHT: PEARL SPAYDE, TREASURER; SIDNEY P. ALBERT, PRESIDENT; JOSEPH FORD, VICE PRESIDENT; AND VERNON QUELLETTE, SECRETARY.

les), Howard Kimball (Long Beach), and Earl Wallis (Northridge) chair. This committee submitted its report and recommendations to the Senate on August 24, 1984.

During one of these committee meetings, the late Howard Kimball turned to me and said, "You want to found a statewide emeritus association, don't you? Why *don't* you found one?" At a stroke, he reversed my thinking and set me forth on the daunting task of creating such an organization. The need for the association had been apparent to me for some time, but it had previously seemed necessary to await the establishment of emeritus groups on the individual campuses before undertaking to form a systemwide body. Kimball's challenge suddenly pointed the way to a more direct and expeditious approach.

The campaign for the state association was launched in 1984 and coincided with my assumption of the presidency of the CSULA Emeriti Association for 1984-1985. That body, which I had founded in 1978, became the sponsor of the statewide project. At the time few other campuses had any emeritus activity, and such that did take place was for the most part informal or merely social, although there were then associations at Fullerton, San Francisco, Cal Poly Pomona, and an emeritus office at Fresno.

Nevertheless, it proved possible to find interested

upon plans for an organizational meeting the following January. On January 3, 1985, a letter was sent to contact individuals on the various campuses announcing the founding meeting on January 25, 1985, in the Committee Room of the Trustees' Conference Center at CSU headquarters. The letter contained an agenda for the meeting, a copy of the proposed constitution, and a request to send a representative and an alternate from each campus.

(The following is a précis from the minutes of this organizational meeting.)

Dr. Herbert Carter, Vice Chancellor, Administration extended greetings, reported the Chancellor would appear when free from other meetings, and expressed his willingness to assist the organization.

The Chair announced that he had sought information from several higher educational organizations about the existence of other systemwide emeritus associations in the United States and that no one knew of any. Presumably, the Chair concluded, AEP would be the first in the nation.

Chancellor Reynolds arrived and commented on the many problems facing the CSU.

The representatives approved the proposed constitution (then the by-laws) after making several changes and elected the following officers: President: Sidney Albert (LA) Vice President: Joseph Ford (Nridge); Secretary: Vernon Ouellette (Dom. Hills);

(continued on page 4)

CSU LOS ANGELES CELEBRATES EMERITI

CSU Los Angeles held its eighth annual "Emeriti Week" from February 5 to 9. President James Rosser issued a proclamation "designating the week as a special time for welcoming former faculty members back to the campus." On this occasion, CSULA celebrated the twelfth anniversary of the founding of the "Emeriti Association." Among the events: Academic Senate Salute to "Emeriti Faculty," Reception Honoring "Emeriti Faculty," A Colloquium in conjunction with a lecture by Professor Seymour Chapin "The French in the Pacific in the Second Half of the Eighteenth Century: An Early Chapter in International Competition Around the Pacific Rim." The Leon Pape Memorial Lecture by Professor Leon M. Lederer from the University of Chicago. A dinner followed by a campus theatrical production for the emeritus faculty.

BYROM NOW EXECUTIVE DIRECTOR

At the February 17 State Council meeting, the Council authorized the President to appoint an Executive Director for ERFA. The Director will have the responsibility "of directing the daily affairs of the Association and of coordinating the function and services necessary for the continued operation of the Association." President Dobkin appointed Jack Byrom to this position; Dr. Byrom has actually been performing the duties of this position since he completed his term as ERFA president.

AFFILIATION PLANS MADE

The State Council at the February 17 meeting approved procedures for CSU campus organizations to affiliate with ERFA and thereby receive a fifteen percent rebate on dues paid to ERFA by members of the local organization. The affiliation program will begin July 1, 1990. To affiliate, the local organization must make a formal application to ERFA. Interested organizations should contact Dr. Byrom at ERFA headquarters at their earliest convenience.

SENATE LIAISON MATHY REPORTS ON CSU ACADEMIC SENATE

In its recent meetings in early January and March the CSU Academic Senate addressed a wide range of issues, including a series of recommendations stemming from the Task Force Report on the Recruitment and Retention of High Quality Faculty.

The CSU may need to employ between 12,000 and 15,000 new tenure track faculty over the next fifteen years in a context in which universities throughout the country will also attempt to add faculty.

The CSU Senate passed several resolutions urging the Chancellor and Trustees to implement the recommendations of the Task Force, which include, in addition to others, these proposals: (1) Begin planning for personnel turnovers in order to meet the supply problem. (2) "Seek funding of new faculty positions in order to provide assigned time for outreach and recruitment of new faculty." (3) Seek funding of new faculty positions "at a more realistic level than Step 8 in the salary schedule." (4) "Employ a faculty of the highest quality which would better represent and reflect the ethnic and cultural diversity of the State." (5) Implement Executive Order 340 calling for the employment, retention, and advancement of qualified disabled persons. (6) Develop alternative retirement plans to the present PERS that would allow transferability of retirement funds from other states. (7) Provide relocation funds. (8) Aid faculty in their efforts to secure suitable and affordable housing.

Although no specific action was taken in the Senate meetings with reference to retired faculty, clearly the impending shortage has interesting implications for retired faculty.—L. Mathy

(continued from page 1)
present, the PERS budget goes through a state agency where gubernatorial appointees can delete items.

ERFA will continue to follow the progress of these legislative items.—W. Tidwell



(Please Print)

**CALIFORNIA STATE UNIVERSITY
EMERITUS AND RETIRED FACULTY ASSOCIATION
Membership Form**

ERFA

Last Name First Name Initial Social Security Number

Home Address — Number and Street City State Zip Code

Date Retired CSU Campus Department () Home Phone

Please enroll me as a retired ERFA member. I hereby authorize deductions to be made from my retirement warrants by Public Employees' Retirement System for the payment of dues to the Emeritus and Retired Faculty Association. I further agree that ERFA act as my agent in payroll deduction agreements and transactions between myself, ERFA, and the Public Employees' Retirement System. This authorization will continue in effect until I submit a timely written notice of cancellation to the ERFA office.

Monthly Retirement Payment:	Recommended Dues	Check One
\$1599 and under.....	\$2.00 per month	<input type="checkbox"/>
\$1600 to \$2299	\$3.00 per month	<input type="checkbox"/>
\$2300 and more	\$4.00 per month	<input type="checkbox"/>
Contributing Member.....	\$5.00 & up per mo.	<input type="checkbox"/>
	Amount \$ _____	<input type="checkbox"/>

Please mail the completed form to:
CALIFORNIA STATE UNIVERSITY
EMERITUS AND RETIRED FACULTY ASSOCIATION
9010 Reseda Boulevard, Suite 224
Northridge, CA 91324

Signature Date

REPORTER NEWS POLICY

What is the news policy of the ERFA Reporter? Recently, the Association received several letters disapproving of some of the articles that have appeared. One colleague wrote he found "the Reporter to be a bland, back-slapping publication" that, for example, used too much space discussing the National Faculty Exchange program when probably no more than one per cent of the membership has 'even the slightest interest' in it."

The editor welcomes these observations; in fact, he is in agreement with the comments about the articles cited.

So—what is the news policy?

Articles are selected in this order, so long as they fit the space available: News 1) of ERFA activities, 2) from PERS and STR of concern to CSU retirees, 3) about political events in California affecting CSU retirees, 4) about political event in the USA affecting CSU retirees, and 5.) from CSU campuses about retirement activities of campus emeritus organizations and retired faculty.

The editor asks that ERFA members let him and their representatives know what they think of this policy.

ERFA INCORPORATION PROPOSED

At the February 17 State Council meeting, the delegates voted to submit to the membership a proposal to amend the constitution to provide for ERFA to incorporate. The name of the corporation would be California State University Emeritus and Retired Faculty Association, Inc. The principal office would be the present Northridge office. The State Council concluded that incorporation would protect the name and provide officers and members of the Council from possible legal problems. As part of the incorporation effort, the Council has proposed a new Article II for the Constitution: "To examine the public laws and policies that relate to the maintenance of the quality of life of retired faculty and work for (or support) those laws and policies which protect the quality of life of retired faculty."

4 (continued from page 2)

Treasurer: Pearl Spayde (Sac), and Members-at-Large: Edwin Carr (Fres) and Ambrose Nichols (Son)

The following goals for AEP were selected: 1. Acquisition of emeritus representation in the CSU Academic Senate 2. Creation of a Committee to work on retirement issues in the CSU Academic Senate. 3. Development of a working relationship with CFA on retirement issues. 4. Creation of an appropriate working relationship with CSU headquarters.

It has been an honor and privilege to have played a role in the creation of this valuable association. I salute and congratulate by successor, Jack Byrom, for his superb service in preserving the organization and guiding its growth into a viable, increasingly influential association. My thanks also to Milton Dobkin, the current president, for his effective leadership.—Sidney Albert

CORRECTION

The ERFA Reporter, paraphrasing the November minutes of the State Council, stated that "Nicholas P. Hardeman, ERFA liaison to CFA, advises that CFA has officially gone on record in support of the proposal for ERFA to have a voting representative on the CSU Academic Senate." Emeritus Professor Hardeman says this information is incorrect. He reports that what he said to the State Council was that three members of the "CFA Board, including the President," had told him that "off-hand none of them could see any reason why CFA would oppose having an ERFA voting representative on the CSU Academic Senate." However, he adds, "These three Board Members indicated that they could not commit CFA at that time, but that it would be well to look into the question."

The CSU ERFA Reporter is a publication of California State University Emeritus and Retired Faculty Association. President: Milton Dobkin. Executive Director: Jack Byrom. Office Manager: Ann Oliver (818)886-1196. Editor: Fred McMahon, 1400 S. Catalina 309, Redondo Beach, CA 90277, (213)540-1111. All rights reserved.

THE ERFA REPORTER
A PUBLICATION OF THE CSU EMERITUS AND RETIRED FACULTY ASSOCIATION
9010 Reseda Blvd., Suite 224
Northridge, CA 91324

MARCH 1990

NON-PROFIT ORG.
U S POSTAGE
PAID
NORTHRIDGE, CA
PERMIT NO. 180

ADDRESS CORRECTION REQUESTED

HAVE YOU MOVED? If so, please complete and return to ERFA:

Name _____

Address _____

